

MM-101



- 2 Motor System – Lay flat plus lift function
- Two pocket on both sides of the recliner
- Chaise pad comfort – head to toe support
- Extended foot rest
- 325 lb. occupant weight capacity
- H 43.5", W 33.5", D 36"; Seat H 19", seat D 21", seat W 21"; Total recline length 75"



*FDA Class II
Medical Device**

Fabric: Felix – 100% Polyester - W



Burgundy



Chocolate



Dove



Navy

NM -1652SO



- 2 Motor System –*Lay flat, Zero Gravity and Trendelenberg (feet above the heart and head position - soothing/therapeutic)*
- Split Ottoman – extends for more leg support
- *Pocketed Coil Spring seat construction*
- *Extended foot rest*
- Available in Performance Fabrics and/or Deluxe Heat & Massage system – special order
- 375 lb. occupant weight capacity
- H 47", W 37.5", D 44.5"; Seat H 20.5", seat D 21", seat W 20"; Total recline length 80"

Fabric: Angus – 100% Polyester - S



Chocolate



Nutmeg



Slate



*FDA Class II
Medical Device*

MM-1652SO



- 2 Motor System – **Infinite positions - Lay flat, Zero Gravity and Trendelenburg**
- Chaise pad comfort – head to toe support
- Split Ottoman – extends for more leg support
- **Pocketed Coil Spring seat construction**
- Available in Performance Fabrics and/or Deluxe Heat & Massage system – special order
- 375 lb. occupant weight capacity
- H 47", W 37.5", D 44.5"; Seat H 20.5", seat D 21", seat W 20"; Total recline length 80"

Stocked Fabric: Velvety – 100% Polyester - WS



Mink



Natural

Add Heat & Massage \$100

FDA Class II Medical Device



NM-1652SO HM

With Heat/Massage



- 2 Motor System –*Lay flat, Zero Gravity and Trendelenberg (feet above the heart and head position - soothing/therapeutic)*
- Split Ottoman – extends for more leg support
- *Pocketed Coil Spring seat construction*
- *Extended foot rest*
- Comes with Deluxe Heat & Massage system
- 375 lb. occupant weight capacity
- H 47", W 37.5", D 44.5"; Seat H 20.5", seat D 21", seat W 20"; Total recline length 80"

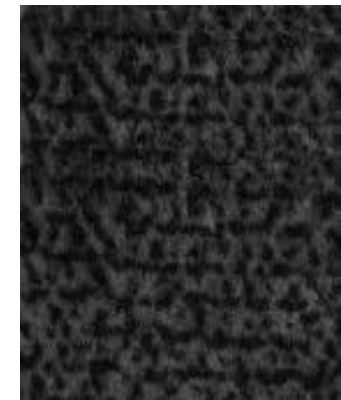
Fabric: Angus – 100% Polyester - S



Chocolate



Nutmeg



Slate

*FDA Class II
Medical Device*



MM-2001



*FDA Class II
Medical Device**

- Comfort Control: Whisper Quiet Power Recline and Lift - Recline to your own comfort zone, or use the lift function to aid in sitting or exiting your chair-Single Motor
 - USB Port in Hand wand – Charge your tablet or phone from the comfort of your recliner
 - Easy to reach side pockets on both sides – Store your magazines, newspapers or remote controls
 - Chaise pad construction – Head to toe comfort and support
 - 375 Pound Weight Capacity
-
- H 40.5", W 32.5", D 37"; Seat H 18.5", seat D 20", seat W 20.5"; Total recline length 65"



Fabric: Pocono – 100% Polyester - S



Cement



Chocolate



Portobello



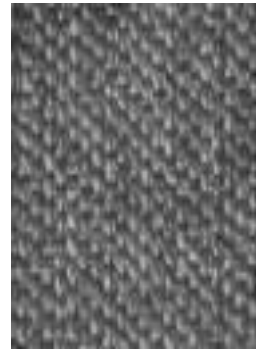
Midnight

NM-3002SO



- **Infinite Position: Zero Gravity, Lay-Flat & Trendelenburg** Recline & Lift
- **Dual motors allow the footrest and back to be controlled independently**
- *Available in Performance Fabrics and/or Deluxe Heat & Massage system – special order
- Pocketed Coil Seating
- USB Port in Handwand – Charge your tablet or phone from the comfort of your recliner
- Chaise pad construction – Head to toe comfort and support
- Comes standard with a bolster pillow for added comfort
- Standard glide-extension footrest
- 375 lb. occupant weight capacity
- H 43.5", W 34", D 42"; Seat H 20", seat D 21.5", seat W 20.5"; Total recline length 77"

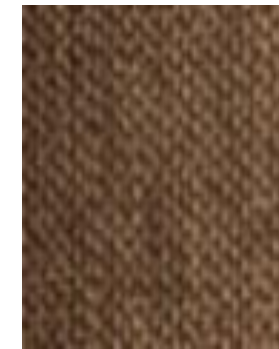
Fabric: Domain – 100% Polyester - WS



Iron



Scarlet



Chocolate



Dove

**FDA Class II
Medical Device**



MM-3002SO HM

With Heat/Massage



Infinite Position: Zero Gravity, Lay-Flat & Trendelenburg Recline & Lift

Dual motors allow the footrest and back to be controlled independently

Comes with Deluxe Heat & Massage system

Pocketed Coil Seating

USB Port in Handwand – Charge your tablet or phone from the comfort of your recliner

Chaise pad construction – Head to toe comfort and support

Comes standard with a bolster pillow for added comfort

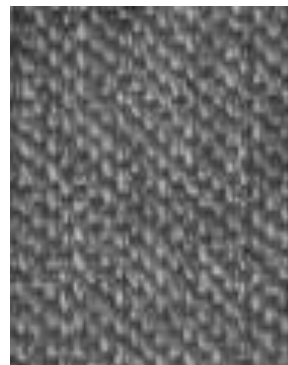
Standard glide-extension footrest

375 lb. occupant weight capacity

H 43.5", W 34", D 42"; Seat H 20", seat D 21.5", seat W 20.5"; Total recline length 77"



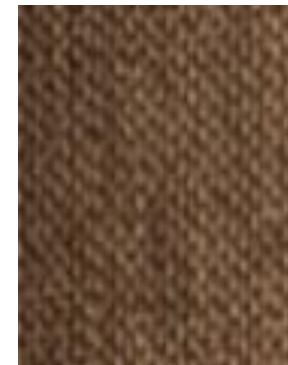
Fabric: Domain – 100% Polyester - WS



Iron



Scarlet



Chocolate



Dove



*FDA Class II
Medical Device*

MM-3250



- Comfort Control: Whisper Quiet Power Recline and Lift - Recline to your own comfort zone, or use the lift function to aid in sitting or exiting your chair-Single Motor
- USB Port in Hand wand – Charge your tablet or phone from the comfort of your recliner
- Easy to reach side pockets on both sides – Store your magazines, newspapers or remote controls
- Chaise pad construction – Head to toe comfort and support
- 375 lb. occupant weight capacity
- H 40.5", W 34", D 36.5"; Seat H 20.5", seat D 20.5", seat W 22.5"; Total recline length 63"



Fabric: Polo – 94% Polyester, 6% Nylon - W



Java



Lapis

**FDA Class II
Medical Device***

MM-3601



- Single Motor system
- **Standard Heat & Massage System with three massage wave/intensity** settings; Massage motors in back and seat, Heat pad in lower back
- Chaise pad seat Construction
- 325 lb Occupant capacity
- H 42", W 33.5, D 38.5", Seat H 19.5", Seat D 20", Seat W 22"; Total recline length 57"

Fabric Options: Spice – 100% Polyester - W



Stone



Walnut

**FDA Class II
Medical Device***

MM-3603



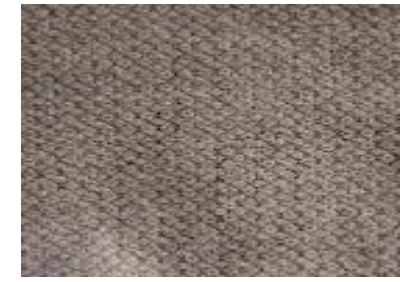
- Casual Styling comfort in a power recliner with lift function
- **2 motor Recline and Lift system: infinite positions up to Lay Flat**
- Chaise pad seat construction with extension ottoman
- Center mounted hand wand for either left or right handed users with a USB port for charging electronic devices
- Side pockets on both sides of the recliner for lots of storage room
- Battery Back via two nine volt batteries (not included) placed in the transformer
- Heavy Duty Steel Mechanism
- 375 lbs. Occupant weight capacity
- 36: W x 39.5" OD x 43.75" H'; seat H 19", seat D 21", seat W 21", Total recline D 73.5"



Fabric Options: Merino 100% Polyester - W



Latte



Steel

**FDA Class II
Medical Device***

MM-3604



**FDA Class II
Medical Device***

- Single Motor system
- Covered in Lexi – StaKleen:
Medical Grade 100%
Polyurethane fabric, bleach
cleanable, anti-microbial and
water repellent
- Chaise pad seat Construction
- Dual Side Pockets
- 325 lb Occupant capacity
- H 42", W 33.5, D 38.5", Seat H
19.5", Seat D 20", Seat W
22"; Total recline length 57"

sta★kleen®
PERFORMANCE FABRIC



Chestnut



MM-3605



**FDA Class II
Medical Device***

- Transitional style
- Single motor recline and lift system
- USB port, 2 Side pockets
- Chaise pad seat construction
- 32.5"W x 38.5: OD x 43" H; seat H 20.5", seat W 21.5", seat D 20.5", Total recline length 66"
- 325 lbs. Occupant weight capacity
- *EMC tested and approved*



Fabric Options: Burbank



Taupe



Java



Pewter

MM-3615



- Single Motor
- **Standard Heat and Massage** soothing relief – massage in seat and back, heat in lower back
- Chaise Pad Seat Construction
- 325 Pound occupant weight capacity
- 32"W x 38.5: OD x 43" H; seat H 19.5", seat W 22", seat D 21.5", Total recline length 66.5"
- **EMC tested and approved**

Fabric Options: Saville 100% Polyester - W

**FDA Class II
Medical Device***



Grey



Earth

MM-3620



FDA Class II Medical Device*

**FDA Class II
Medical Device**

- Comfort Control: Whisper Quiet Power Recline and Lift - Recline to your own comfort zone, or use the lift function to aid in sitting or exiting your chair-Single Motor
- **Standard Heat & Massage – Heat pad in lower back area, multi-function/intensity massage motor in seat and back areas**
- Deeply padded arms for added comfort and support on entering and exiting the recliner
- Chaise pad construction – Head to toe comfort and support
- 325 Pound occupant weight capacity
- MegaGuard Anti Microbial Fabric upgrade

Fabric: MegaGuard - Dynamo



Leather



Indigo



MM-3730



**FDA Class II
Medical Device***

- Casual Styling comfort in a power recliner with lift function
- 4 motor Recline and Lift system: **infinite positions up to Lay Flat with Power Adjustable Headrest and Lumbar Comfort Zones**
- Chaise pad seat construction with extension ottoman
- Center mounted hand wand for either left or right handed users with a USB port for charging electronic devices
- 375 lbs. Occupant weight capacity
- **Lithium Battery Pack included**
- 36: W x 39.5" OD x 43.75" H'; seat H 19", seat D 21", seat W 21", Total recline D 73.5"

EMC tested and approved



Fabric: Stonewash



Dove



Granite



Gunmetal

MM-3712



**FDA Class II
Medical Device***

- Infinite Position: **Lay-Flat, Recline & Lift**
- **MegaGuard™ Fabric** with Alta Senior Living finish – Anti-Microbial, stain resistant, simple to clean, water repellant with a moisture barrier backing (does not allow any liquid to penetrate into the filling materials)
- **Four Motor Comfort System**
 - **Power-Tilt Headrest and Power Adjustable Lumbar**
 - **Dual motors** allow the footrest and back to be controlled independently
- **Three Zone Heat** – Heat in upper back, lower back and chaise pad ottoman areas – keeps your back and legs warm
- **Pullout Cup Holder (LAF front arm) FLAT CHARGING STATION (RAF)** Easy to reach side pockets on both sides – Store your magazines, newspapers or remote controls
- Chaise pad construction – Head to toe comfort and support
- Standard glide-extension footrest
- 375 Pound occupant weight capacity
- **Lithium Battery Pack included**

H 43", W 39.5", D 43"; Seat H 20", seat D 21.5", seat W 21"; Total recline length 72"



Stocked Cover: Ovation



Ebony



Stone



Mink

MM-3710



- Infinite Position: **Lay-Flat, Recline & Lift**
Recline to your comfort zone, or use the lift function to aid in sitting or exiting your chair
- **MegaGuard™ Fabric** with Alta Senior Living finish – Anti-Microbial, stain resistant, simple to clean, water repellent with a moisture barrier backing (does not allow any liquid to penetrate into the filling materials)
- **Four Motor Comfort System**
 - **Power-Tilt Headrest and Power Adjustable Lumbar**
 - **Dual motors allow the footrest and back to be controlled independently**
- **Three Zone Heat** – Heat in upper back, lower back and chaise pad ottoman areas – keeps your back and legs warm
- Easy to reach side pockets on both sides – Store your magazines, newspapers or remote controls
- Chaise pad construction – Head to toe comfort and support
- 375 Pound weight test
- **Lithium battery included**

H 42", W 36", D 43"; Seat H 19.5", seat D 21", seat W 19"; Total recline length 72"

Stocked Cover: Velvety



Natural



Mink



Navy

**FDA Class II
Medical Device***

MM-3815

New Air Bladder Massage



*FDA Class II Medical Device**

*Weight Capacity:
Occupant weight up to
375 lbs.*

4 motor lift and recline
Infinite Position to lay flat-back
and chaise work independently

Air bladder massage

*Adjustable headrest and
lumber*

Pull out arms with cup holders

Fabric – Capricio Walnut 85% Poly/15%PU



Walnut



Olive



Saddle



MM-3900 *NEW Tilt Chair*



*FDA Class II
Medical Device**

- 5 Motor *Infinite Position*
- 375 lb. occupant weight capacity *with pull out arms Wireless Charger/Cup Holder*
- *Tilt chair-true zero gravity*
- *Three Zone Heat-back, seat and chaise*
- *Adjustable headrest and lumbar with extended ottoman*
- Easy to use toggle remote
- *Lithium Battery Included*



Stocked Cover: Arula-Cleaning code W



Elephant



Mink



Dove

MM-4001



*FDA Class II
Medical Device**

- Single Motor system
- USB Wand
- Chaise pad seat Construction
- 325 lbs. Occupant capacity
- H 41.5", W 32.5, D 41.5", Seat H 19",
Seat D 19", Seat W 19"; Total
recline length 66"



Fabric Options: Popstitch 100% Polyester - W



Pebble



Tumbleweed



Java



Chianti

MM-5001



- Comfort Control: Whisper Quiet Power Recline and Lift - Recline to your own comfort zone, or use the lift function to aid in sitting or exiting your chair-Single Motor
- USB Port in Hand wand – Charge your tablet or phone from the comfort of your recliner
- Chaise pad construction – Head to toe comfort and support
- 375 Pound Weight Capacity

H 44", W 37, D 38", Seat H 21", Seat D 20", Seat W 22.5";
Total recliner length 67.5"

Fabric: Kaysen - 100% Polyester - S



Chocolate



Graphite



Mushroom

**FDA Class II
Medical Device***

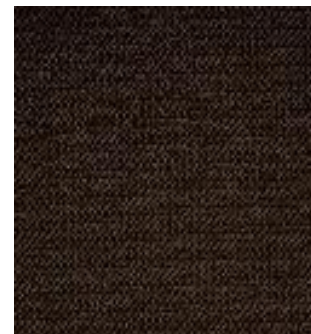
MM-5300



*FDA Class II
Medical Device**

- Comfort Control Single Motor recline and lift function system-Single Motor
- Chaise pad comfort – head to toe support; ample seat width
- Scoop seat for added comfort
- 375 lb. occupant weight capacity
- H 45", W 39.5", D 39.5"; Seat H 21.5", seat D 21", seat W 20.5"; Total recline length 69.5"

Fabric: Domain– 100% Polyester – S/W



Chocolate



Iron



MM-6200



FDA Class II
Medical Device*

**FDA Class II
Medical Device***

- Comfort Control Single Motor recline and lift function system
- Two pocket on both sides of the recliner
- Chaise pad comfort – head to toe support; ample seat width
- Extended foot rest to comfortably seat someone 6”4’
- Comes with scratch resistant fabric upgrade
- 375 lb. occupant weight capacity
- H 47.5”, W 43”, D 37.5”; Seat H 21.5”, seat D 21”, seat W 22.5”; Total recline length 72.5”

Fabric: Watford Cognac- 100% Polyester - W



MM-6410

New TruPetite



*FDA Class II
Medical Device**

- TruPetite™ - 17.5 inch seat height allows easier entering and exit of the recliner
- Single motor with 375 pound weight capacity
- Seat Width 19' Depth 18' Height 17.5'
- Total Width 30.5' Depth 36' Height 39.5'



Stocked Cover: Benti – Performance Finished



Latte



Espresso

NM-7001



Weight Capacity: Occupant weight up to 500 lbs.



- Dual motor recline and lift system-synchronized to keep the recliner level to floor when reclining or lifting
- 500 lb. occupant weight capacity
- Chaise pad head to toe comfort
- H44", W 39.5", D 44"; seat H 19.5", seat W 26", seat D 22"; total recliner length 71.5"

Fabric – Vance – 100% Polyester - WS



Blue



Cafe



Wine



**FDA Class II
Medical Device***

NM-7001HM

Heat/Massage

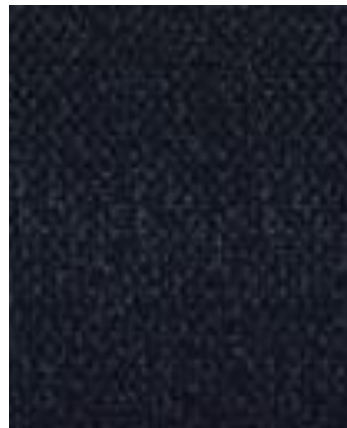


*FDA Class II
Medical Device**

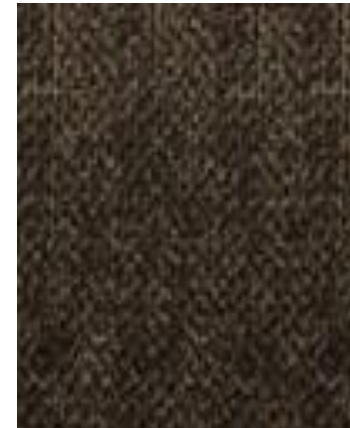
***Weight Capacity: Occupant
weight up to 500 lbs.***

- Dual motor recline and lift system-synchronized to keep the recliner level to floor when reclining or lifting
- 500 lb. occupant weight capacity
- Chaise pad head to toe comfort
- H44", W 39.5", D 44"; seat H 19.5", seat W 26", seat D 22"; total recliner length 71.5"

Fabric – Vance – 100% Polyester - WS



Blue



Cafe



Wine



MM-7305

**Weight Capacity: Occupant weight
up to 500 lbs.**



- Dual sync drive and lift system-synchronized to keep the recliner level to floor when reclining or lifting
- 500 lb. occupant weight capacity
- Chaise pad head to toe comfort

Stocked Cover: Darby – Performance Fabric



Pewter



Java



Midnight

**FDA Class II
Medical Device***

Mega Motion Heat & Massage Systems

DELUXE HEAT & MASSAGE

Two massage zones

- Dual massage motors located in the middle of the recliner's back and middle of the seat
- Three levels of massage intensity - adjust to your requirements
- Three massage patterns - varying from pulse, wave and full massage

Two heat zones in the lower back area (lumbar area) and seat area

- Two easy-to-use temperature selections - low and high
- System cycles off after 20 minutes of use



STANDARD HEAT & MASSAGE

Two massage zones

- Single massage motor located in the middle of the recliner's back and middle of the seat
- Three levels of massage intensity - adjust to your requirements
- Three massage patterns - varying from pulse, wave and full massage

Heat zone in the lower back (lumbar) area

- Two easy-to-use temperature selections - low and high
- System cycles off after 20 minutes of use

